

Are you INOVATIVE, DYNAMIC, AGILE & ENTERPRISING?

**EKURHULENI WEST TVET COLLEGE
CENTRE FOR ENTREPRENEURSHIP
RAPID INCUBATOR (CFERI)**



**INSETA ANNUAL GENERAL
MEETING**

06 November 2019

ENTREPRENEURSHIP RAPID INCUBATOR

» CRAFTING 21ST CENTURY ENTREPRENEURS





11/6/2019



CALL FOR CATALYTIC PROJECT PROPOSALS



Working together for a skilled tomorrow

Ground floor, 37 Empire Road
Parktown, Johannesburg 2193
P.O. Box 32035, Braamfontein 2017

Telephone: 011 381 8900
Website: www.inseta.org.za

CALL FOR CATALYTIC PROJECT PROPOSALS

INSETA hereby calls for catalytic proposals that address skills development in the insurance sector. Proposals will be considered from South African public TVETs, UOTs and Universities, employers in our sector, burial societies, coops, NGOs, Professional bodies and industry associations.

Proposals that are innovative, technology focused and impactful within the following areas will be given preference:

- SME's
- Youth
- Systems/ Business/ Data Analysts and Systems Developers training programmes

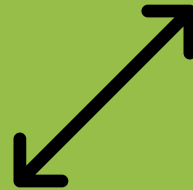




- INSETA's 2017/2018 annual report made reference to the PricewaterhouseCoopers (PwC) published review of the outlook of the insurance industry for 2020, which identified the five megatrends that are altering the global insurance landscape.
 - However as the Centre we focused on the first two drivers mainly;
Social networks and changing customer behaviour,
and
Technology, innovation and FinTech.

PROGRAMME RATIONAL

PROJECT OUTPUT



There are two main categories /streams that the entrepreneurs will be assisted to develop their businesses namely; App Development and Social media consultancy in the insurance sector. This will blend both the technological innovations and the changing social media landscape in the sector.



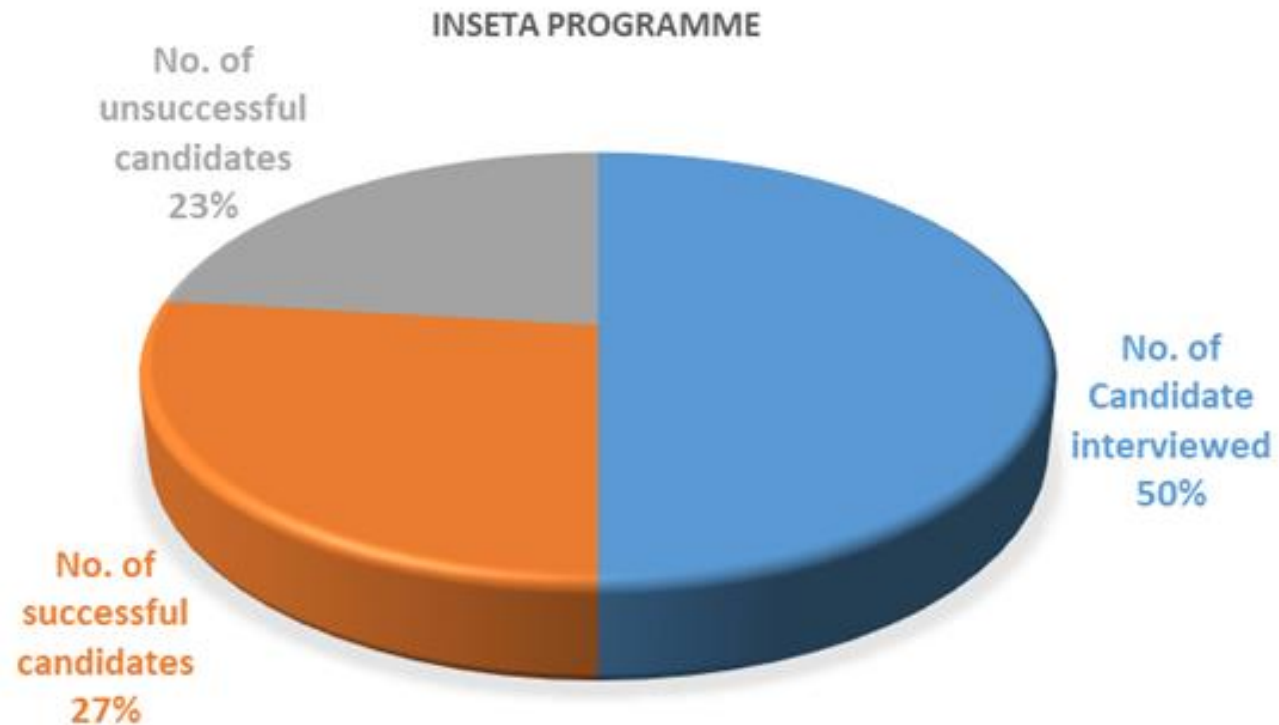
The selection of the global trends in the insurance sector will position the small businesses to provide a compelling and cutting edge business solutions that speak to the needs of the sector.

Insurance Sector Education and Training (INSETA).

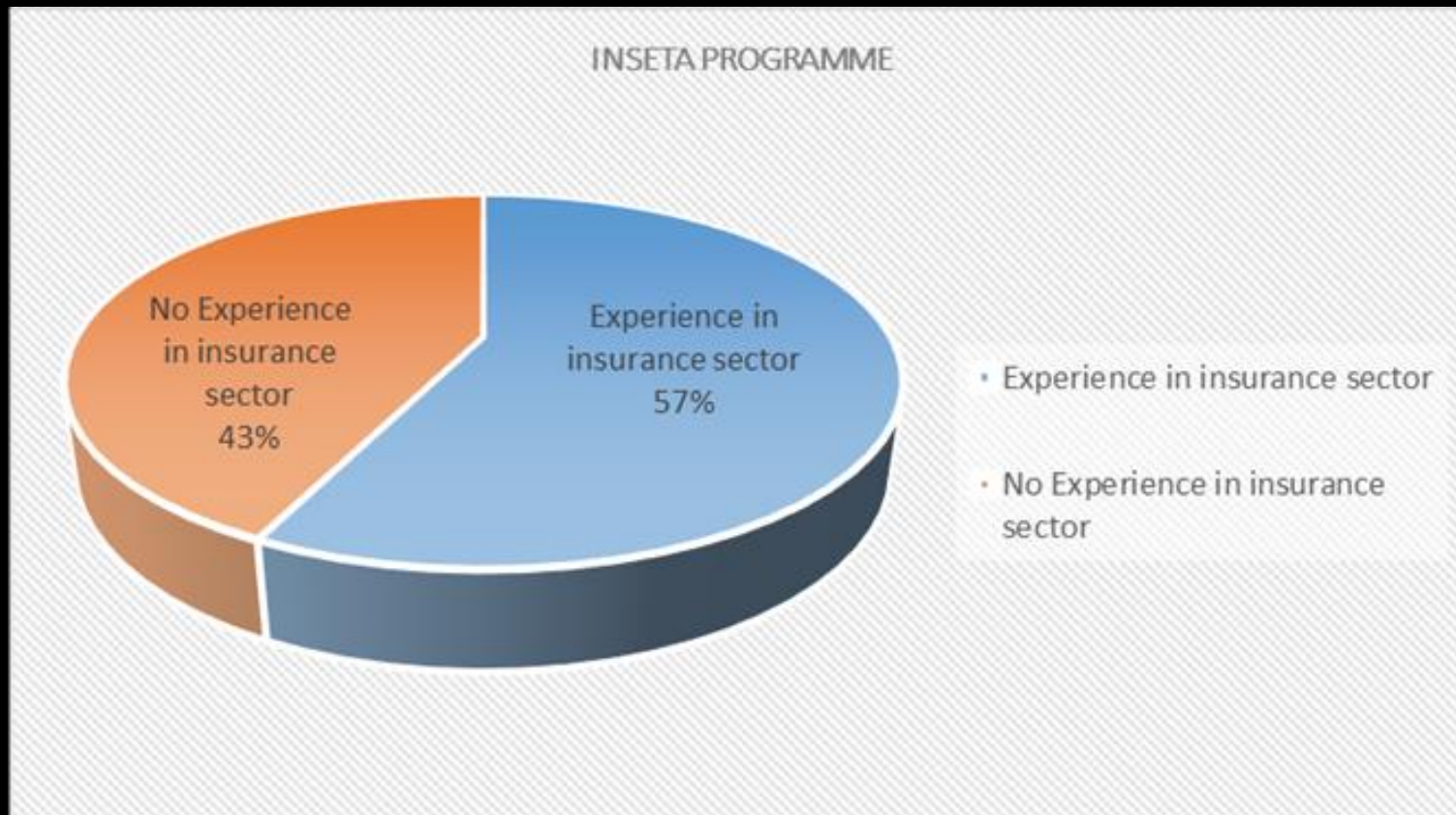
- On the 28 February 2019, the Centre submitted a proposal to INSETA responding to their Call for catalytic project proposal.
- On the 04 March 2019, the centre received approval for the implementation of the proposed project.
- Total number of Candidates : **21**
- The programme was launched on the 14 October 2019.



INTERVIEWED CANDIDATES AND THE RESULTS

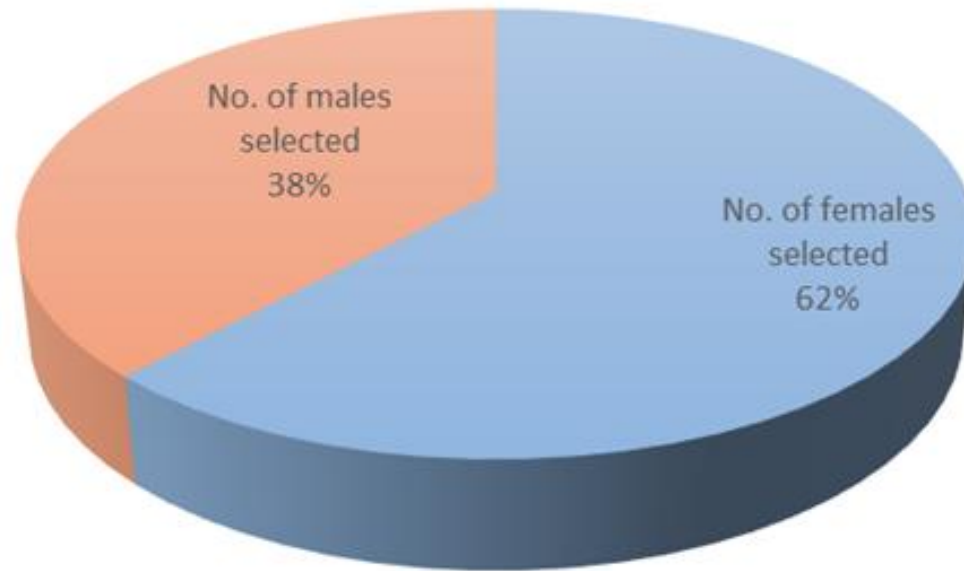


INSURANCE SECTOR EXPERIENCE



GENDER REPRESENTATION

INSETA PROGRAMME



■ No. of females selected ■ No. of males selected

MONITORING AND EVALUATION

- The programme will be subjected to internal and external monitoring and evaluation instruments; including weekly centre programme review meetings, questionnaires and monthly programme meetings with INSETA.
 - PLUS !!!!
 - Closed up report (editing, Printing)
 - External Monitoring and Evaluation report.
- S&E Development

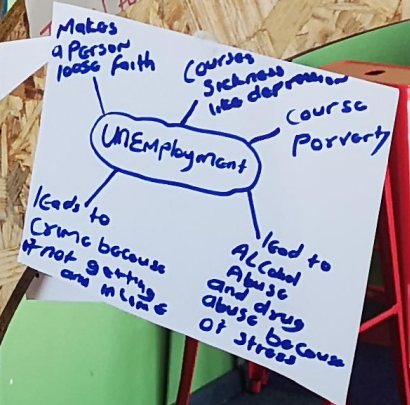
UNEMPLOYMENT
 * Affects mental health
 * Lack of sleep
 * Depression
 * Doesn't only affect the person who lost the job but family members too

Frustration, Depression, worth less
 low self-esteem, Don't feel confident. lose respect from people that are surrounding

LOSING FOCUS
 AND SELF MOTIVATION

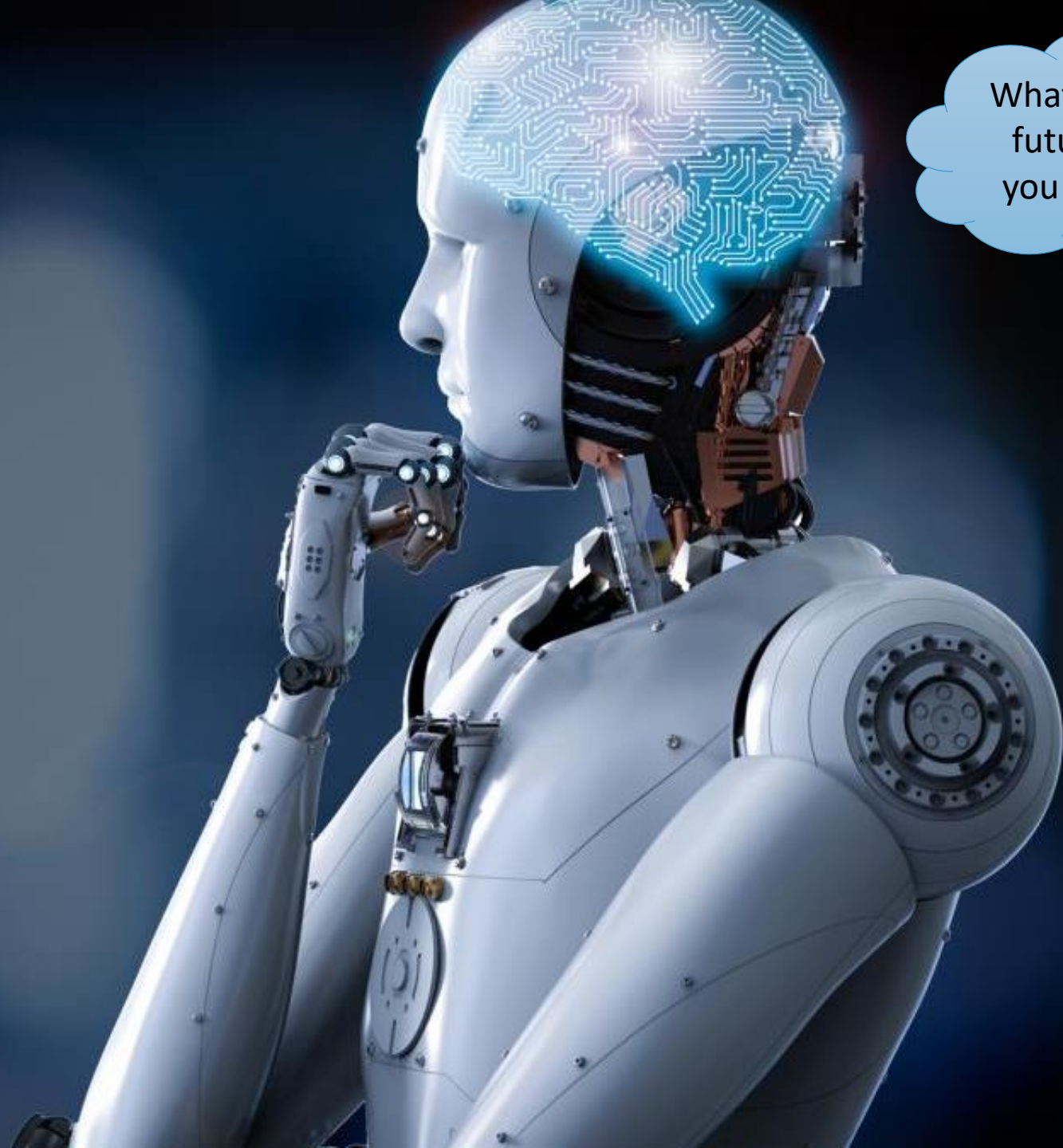
DEPRESSION
 STRESS
 TRAUMA
 SELF HATRE

Suicidal

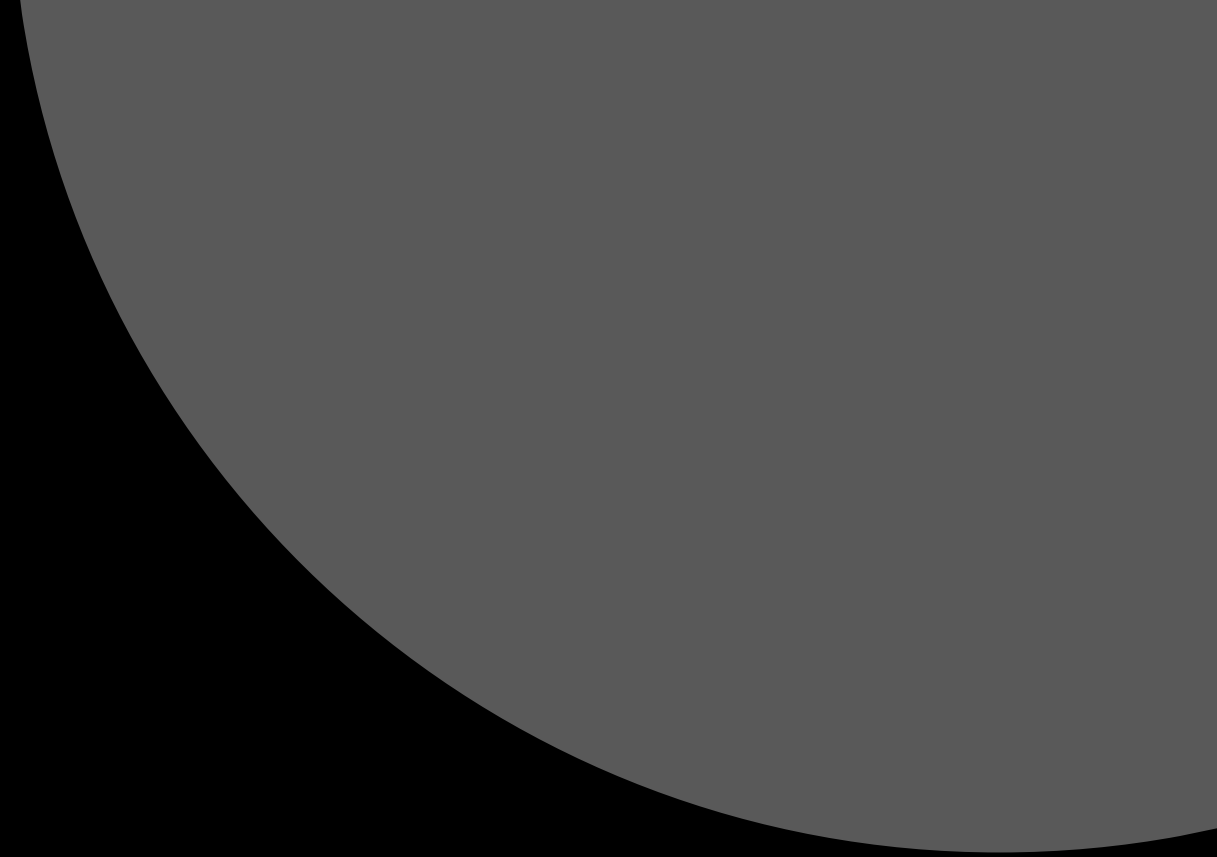
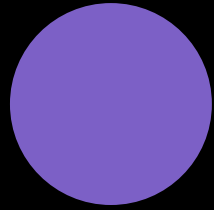
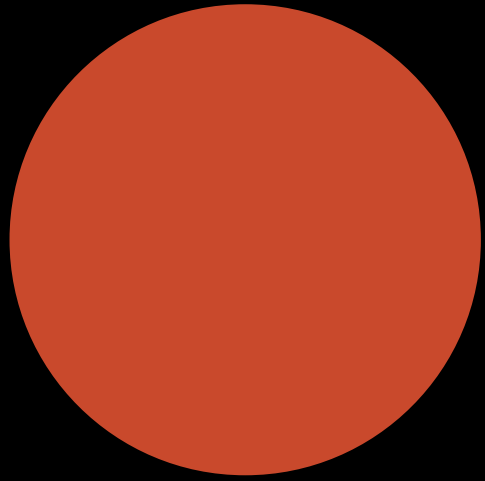


REFLECTION ON TREE: BEFORE JOINING THE PROGRAMME AND THE IMPACT UNEMPLOYMENT - 14



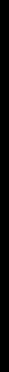


What does the future hold, you may ask!



EWC-CENTRE FOR ENTREPRENEURSHIP RAPID INCUBATOR

CURRENT PROJECTS



MAKERSPACE

A **MakerSpace** is a community operated workspace where people with common interests, often in computers, machining, technology, science, digital art or electronic art, can meet, socialise and collaborate.

The inclusion of higher end design and production technologies and software at the respective **MakerSpaces** will foster longer term market opportunities for the students of the TVET Colleges and the surrounding communities they aim to serve.

Drone Start-up Accelerator Programme

BUSINESS LOUNGE



THE EXPECTED IMPACT OF THIS INITIATIVE

- Students to be exposed to the megatrends that are altering the global insurance landscape.
 - Students to be able to translate the skills and knowledge acquired into businesses thus creating jobs and support for the economy.
 - After-care business support services. (Sustainable).
- SMME OWNERS
 - Supplier and Enterprise development.

Are you **INOVATIVE, DYNAMIC, AGILE & ENTERPRISING**? Join the **EWC Entrepreneurship Programme** today!

ENTREPRENEURSHIP RAPID INCUBATOR » CRAFTING 21ST CENTURY ENTREPRENEURS

OUR SERVICES

- » Free Business Advisory Service
- » Specialised Business Training
- » Access to the Centre's Facilities
- » Access to Finance from Partners
- » Access to Markets from Partners
- » Assistance with Business Compliance
- » Free Basic Business Skills Training



PROGRAMMES OFFERED

- ✓ Start-Up 1
- ✓ HP LIFE Programme
- ✓ Incubation Programme (Metal fabrication)
- ✓ Business Accelerator
- ✓ SMME Accelerate
- ✓ GET Ahead
- ✓ Accounting & Finance
- ✓ Marketing



Mokgethi Nkosi



mokgethin@ewc.edu.za



011 055 5651



EWC Kathorus Campus » C/O Motaung & Poole Street, Palime Section, Katlehong



EWC Cfe Rapid Incubator



@ewccferapid



@EWCCfERapid



ewc-cferi

SABS SABS SABS
ISO 9001 OHSAS 18001 ISO 14001

THANK YOU

